

GUIDE
FOR GUESTS
2025

Hiking tours

FROM OSADA AUGUSTÓW

5 trails perfect for both
short and long walks

DISCOVER BEAUTIFUL PLACES IN IZERSKIE FOOTHILLS



#1 Słupiec

As you drive to Osada, you pass a majestic rock formation towering over the picturesque hamlet of Augustów. This is one of our guests' favorite walking spots, especially at sunset. From the top, there is a beautiful view of the Izerskie Mountains, the Kaczawskie Mountains, and the majestic Karkonosze Mountains, which create an unforgettable and breathtaking landscape in the evening light.



Słupiec is an ancient volcanic structure, a remnant of a volcanic chimney (or crater) of volcanic origin. In the past, volcanic activity occurred in the Izerskie Foothills, including the Giebułtów area, leaving behind traces in the form of such formations.

It is definitely worth taking this short circular walk to admire the breathtaking mountain panorama and the charm of our surroundings.

How long will the hike take?

About 30 minutes

How long is the round trip?

About 1.6 km

Can I go with a dog?

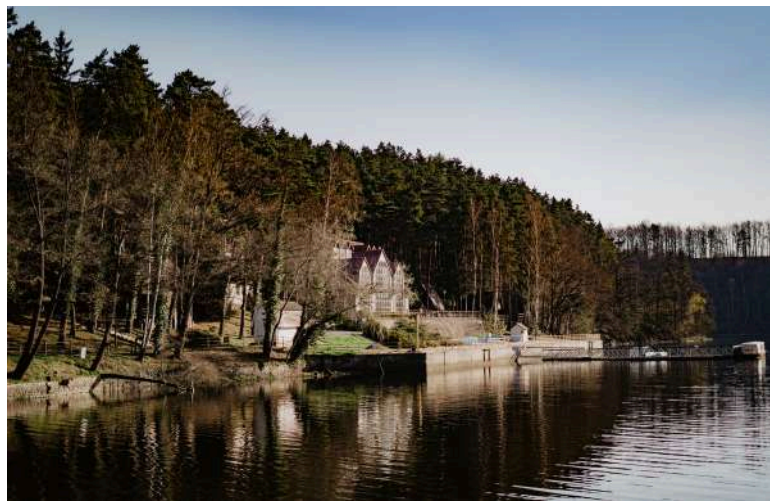
Yes

Can I ride a bike?

Yes

What is the difficulty level?





#2 Złotnickie Lake

Lake Złotnickie is a charming body of water located near Gryfów Śląski, in the Izerskie Foothills. It was created by damming the Kwisa River with the Złotnicka dam, built in the 1920s. The lake is a popular recreational spot, perfect for water sports, fishing, and relaxation by the water. Surrounded by wooded hills, it offers a tranquil atmosphere and numerous hiking and biking trails in the area, making it an attractive destination for tourists.

 **Ed Sheeran** visited the Rajsko Castle located by Lake Leśniańskie, adjacent to Lake Złotnickie, in November 2018. He spent six days there, relaxing with his loved ones. During this time, he explored the area, walked in the forest, played board games, and participated in knight shows and early music concerts. According to reports, he particularly enjoyed Polish wines and game meat roasted over the fire.

The trail leading to the lake, once serving as an access road to Augustów, now functions as a walking and biking route. While hiking it, you can enjoy the tranquility of nature and beautiful views. Just before the main road, during the season, a delicious stop awaits weary hikers—a field kitchen serving aromatic grilled sausages and traditional pea soup.

How long will the hike take?

About 2 hours

How long is the round trip?

About 8 km

Can I go with a dog?

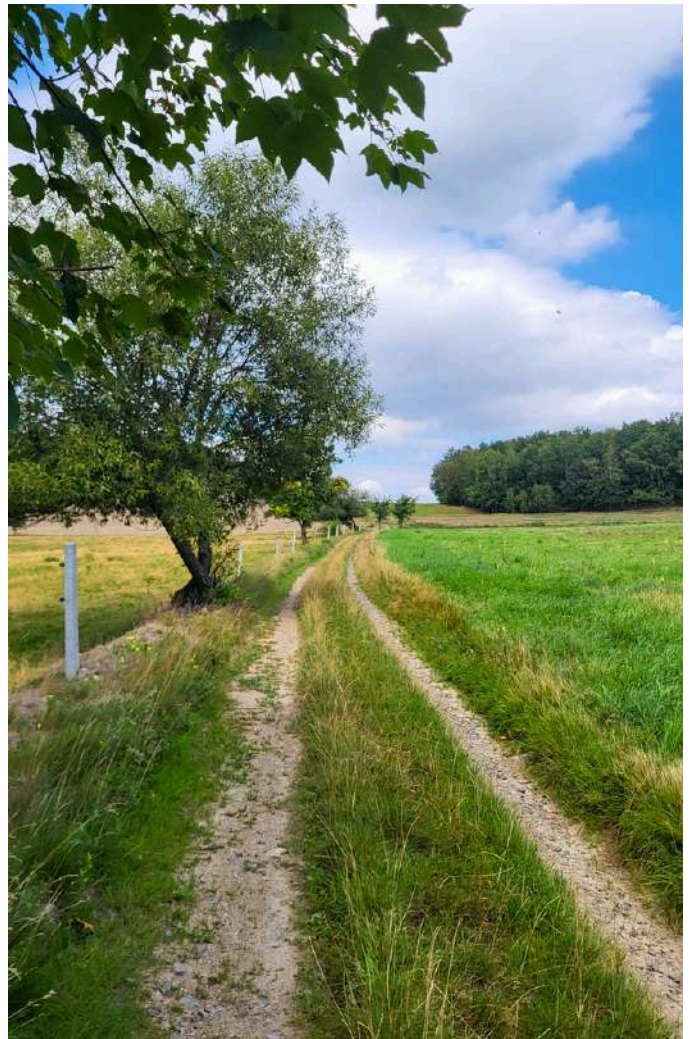
Yes

Can I ride a bike?

Yes

What is the difficulty level?





#3 Czocha Castle

Czocha Castle is a medieval fortress located by Lake Leśniańskie, near Gryfów Śląski. Built in the 13th century, it served a defensive purpose and has been rebuilt several times, giving it its current majestic appearance. The castle is famous for its numerous legends, including tales of hidden chambers and ghosts, which attract tourists. Today, it functions as a hotel and museum, offering visits to its mysterious halls and undergrounds, making it one of the most interesting castles in Poland.



Czocha Castle has often been used as a backdrop for films and series, adding to its charm. One of the most well-known films shot at the castle is the cult comedy "Where is the General?" from 1963. The castle also appeared in the popular Polish series "The Secret of the Cipher Fortress" and "The Witcher."

This trail, the longest of those presented, takes you through beautiful landscapes, with a section running along an asphalt road. Along the way, we also pass a beer house.

How long will the hike take?

About 3 hours and 45 minutes

How long is the round trip?

About 13.3 km

Can I go with a dog?

Yes (but dogs are not allowed inside the castle)

Can I ride a bike?

Yes

What is the difficulty level?





#4 Weaver's Bench

This place was called "Weber's Ruh," which can be translated as "the weaver's peace." It was a favorite spot for the residents of the vibrant village of Gebhardsdorf, who often came here to catch their breath after daily chores, meet with friends, reflect, and, above all, enjoy the silence, tranquility, and beauty of the remarkable panorama of the Izerskie Mountains stretching out from here.

Weavers, seeking respite from the noise of their looms, frequently visited this small hill, which stands at an elevation of 450 meters above sea level. A simple bench awaited walkers and tourists, becoming a symbol of relaxation and a moment of respite in this picturesque setting. After World War II, the bench was destroyed but has since been rebuilt.

The trail is almost completely flat, making it easy to traverse and should pose no difficulties.



900 meters down from the Weaver's Bench lies, according to some sources, the oldest half-timbered house in Poland. This refers to building number 134 (previously number 3 until 1947). In 1508/1509, the Dominican Johann Tetzel stayed here, gaining notoriety as a seller of indulgences for sins that were yet to be committed. This historical site is commonly referred to as Tetzehaus.

How long will the hike take?

About 1 hour

How long is the round trip?

About 3.2 km

Can I go with a dog?

Yes

Can I ride a bike?

Yes

What is the difficulty level?





#5 Hunting Lodge of Ernst Gütschow

The hunting lodge of Ernst Gütschow (German: Jagdhütte) is a former property belonging to the last owner of Czocho Castle, located in the forest between the villages of Świecie and Stankowice. It was built in the 1930s and consisted of a stone basement, which still survives today, and a wooden above-ground section that was dismantled under unknown circumstances after the war. The lodge was equipped with a gas installation and water supply. After World War II, the building was referred to as the "old forester's lodge." To this day, the basement and the chimney stack with the fireplace remain. Nearby, there is a blue hiking trail (PTTK) connecting Czocho Castle with the castle in Świecie. An information board has been placed near the ruins of Gütschow's lodge, along with a picnic area for tourists and a feeding station for animals.



The castle was luxuriously furnished by Ernst Gütschow, who created an impressive library containing around 25,000 volumes. Among them were rare works, such as Vier Bücher von Menschlicher Proportion by Albrecht Dürer, published in Nuremberg in 1528. Gütschow was also passionate about collecting art, weapons, sculptures, furniture, and paintings, and his collection included numerous gold items, including imperial coronation insignia.

How long will the hike take?

About 2 hours

How long is the round trip?

About 6.4 km

Can I go with a dog?

Yes

Can I ride a bike?

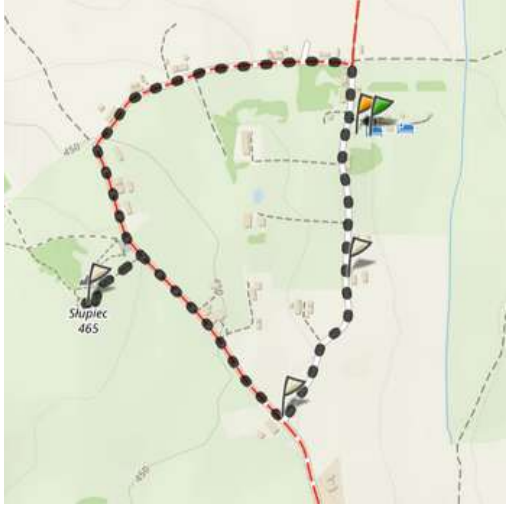
Yes

What is the difficulty level?



Overview maps with routes and altitudes

Słupiec

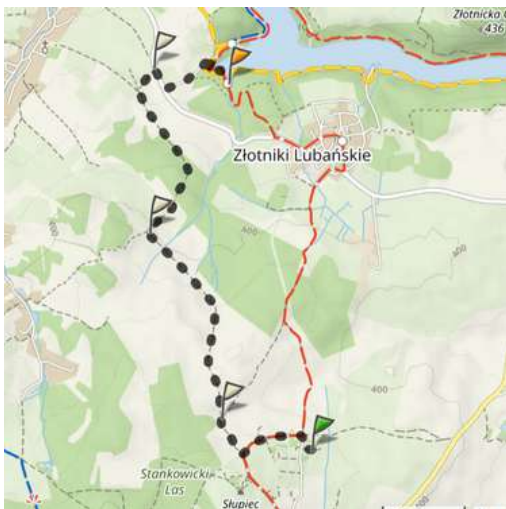


1.65 km · 0:27 h

mapa
turystyczna



Złotnickie Lake



Trasa przez: Złotniki Lubańskie, skałki
4.04 km · 1:01 h

mapa
turystyczna



Czocha Castle



Trasa przez: Zamek Czocha, parking
13.27 km · 3:44 h

mapa
turystyczna



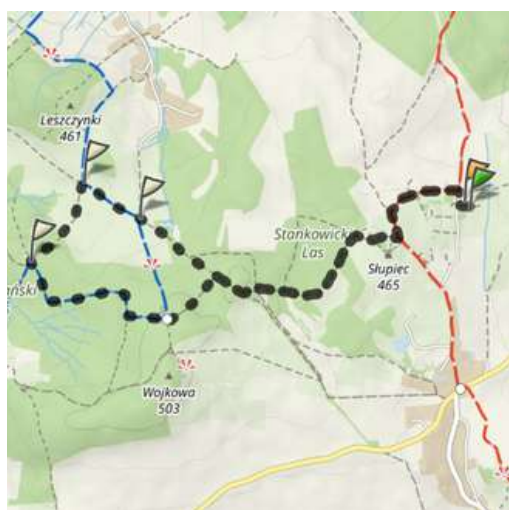
Weaver's Bench



Trasa przez: Augustów
1.61 km · 0:26 h



Hunting Lodge of Ernst Gütschow



Trasa przez: Pod Wajkową
6.35 km · 1:52 h



The calculated lengths of the routes and times are not exact; they are approximate values. The values were generated by the portal mapyturystyczne.pl.

Dear Guests,

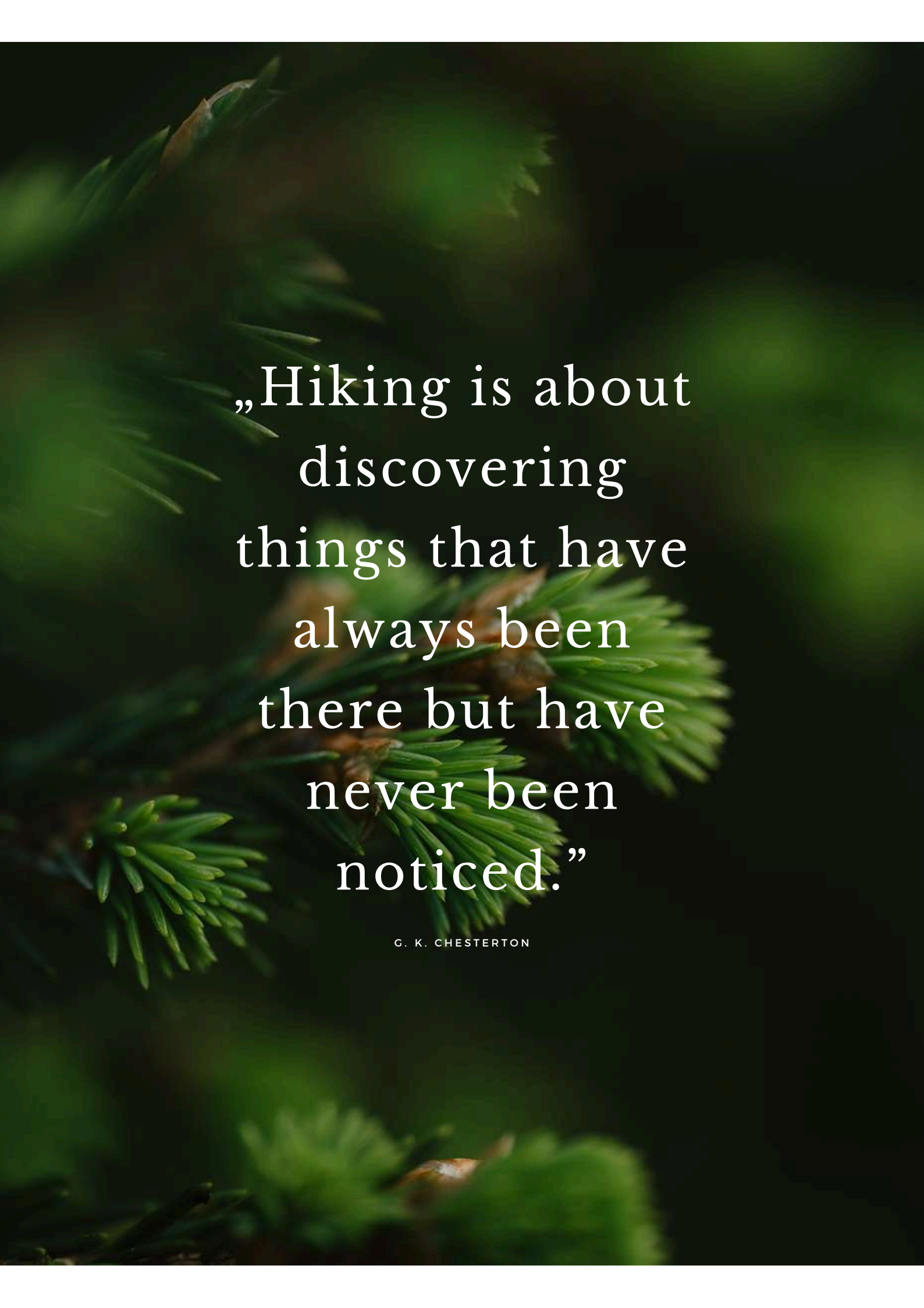
Thank you for using our eBook. We hope that exploring the beauty of the surrounding trails has provided you with many unforgettable moments. Remember that every step in nature is not only an adventure but also a time for relaxation and respite. We encourage you to share your experiences and photos on our social media. We wish you happy hiking and hope to see you again!

Best regards,

The OSADA AUGUSTÓW Team

eBook AUTHOR: Paulina Mańczyńska

PHOTOGRAPHY: Edyta Dyduch / Paulina Mańczyńska



„Hiking is about
discovering
things that have
always been
there but have
never been
noticed.”

G. K. CHESTERTON